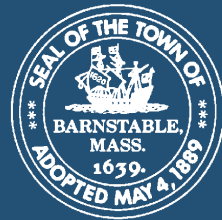


Local Comprehensive Plan

Town Council
January 4, 2021



What is an LCP and why is it important?

A local comprehensive plan **defines a long-term vision** for the community by anticipating and guiding the **rate of new development** and coordinating it with **capital facilities**. A comprehensive plan defines the **unique values** we seek to protect and encourages **balanced economic development**.

What is an LCP and why is it important?

In addition to articulating a vision and growth policy, the local comprehensive plan will help coordinate, guide and **balance policy decisions** related to development, infrastructure, the economy, and resource protection.

Why is it important?

This process will help coordinate and solidify the **interrelationships** between the Town Council Strategic Plan, Capital Improvement Plan, and our Comprehensive Wastewater Master Plan, among others.

Why is it important?

Our mission is to protect the Town of Barnstable's quality of life and unique character, engage our citizens, and enact policies that respond to and anticipate the needs of our community.

Our Current LCP

The Town last updated its local comprehensive plan in **2010**, with much of the research and community outreach occurring several years earlier.

Local Comprehensive Plan Content

LCP Content

- Cape Cod Commission Local Comprehensive Plan Regulations
- Consistency with CCC Regional Policy Plan

Vision Statement



Existing Conditions + Data



Goals



Capital Facilities Plan



Housing

Proposed Building Types



Accessory Dwelling Unit



Micro-units



Townhouse



Double Decker



Manor House



Walk-ups



Targeted Action Plan

**MAKE IT
HAPPEN.**

Community Participation

Mass Required Plan Elements

- Land Use
- Demographics and Housing
- Economic Development
- Natural and Cultural Resources
- Open Space and Recreation Services
- Facilities Transportation and Circulation

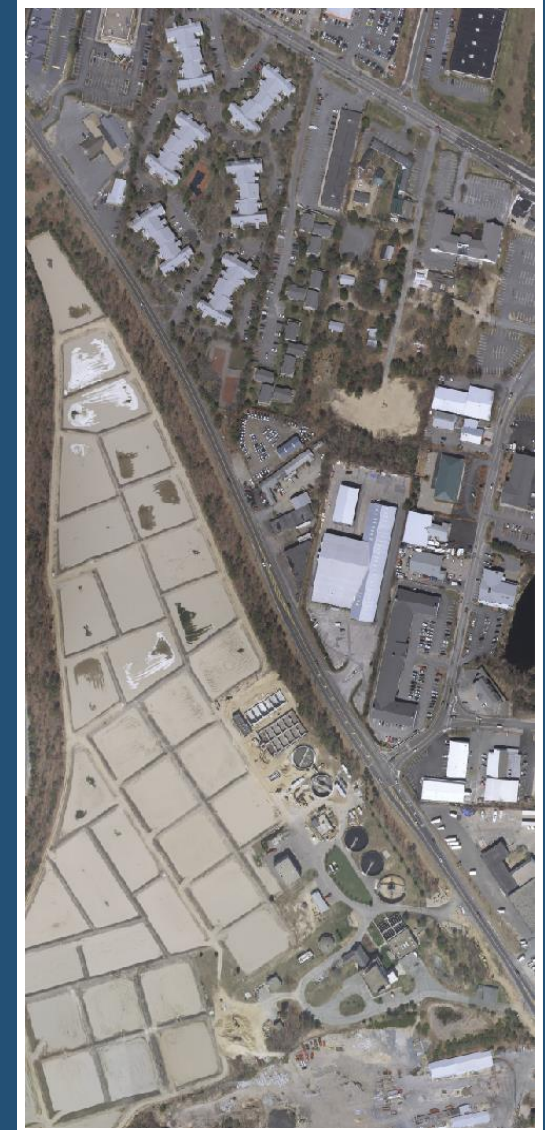
Natural Systems

- Water Resources
- Ocean Resources
- Wetland Resources
- Wildlife & Plant Habitat
- Open Space



Built Systems

- Community Design
- Coastal Resiliency
- Capital Facilities & Infrastructure
- Transportation
- Energy
- Waste Management



Community Systems

- Cultural Heritage
- Economy
- Housing



Why Update Now

- Cape Cod Commission Regional Policy Plan Update (2018)
- Cape Cod Commission Local Comprehensive Plan Regulations (2019)
- 2020 Census Data

C A P E C O D
REGIONAL
P O L I C Y P L A N

F R A M I N G T H E F U T U R E

CAPE COD COMMISSION | 2018

Why Update Now?

The Town has responded to the Cape's adopted regional wastewater planning framework by developing a sewer expansion plan (**CWMP**)

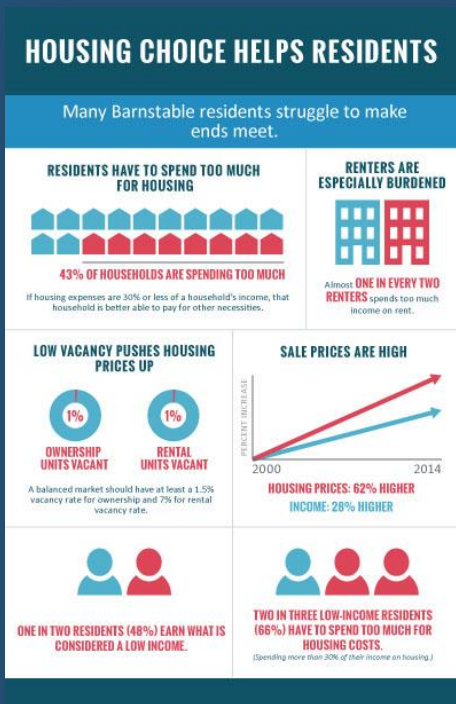


BARNSTABLE
Water Resources

water quality...distilled

Why Update Now

The urgent need to respond to a state-wide housing crisis and address a diverse range of **housing needs**



Why Update Now

Climate resiliency has become central regional policy priority.



Why Update Now?

Guide interrelationships between plans and efforts across all disciplines

LCP Committee

- Local Comprehensive Planning Committee
 - Can be the Planning Board

LCP Adoption

- Planning Board
- Town Council
- Cape Cod Commission Certification

LCP Update Strategy

Part I

- **Data & Existing Conditions**
- **Community Visioning**

Part II

- Goals
- Targeted Action Plan
- Performance Measures